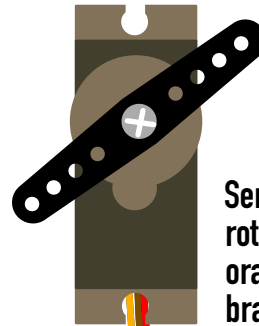
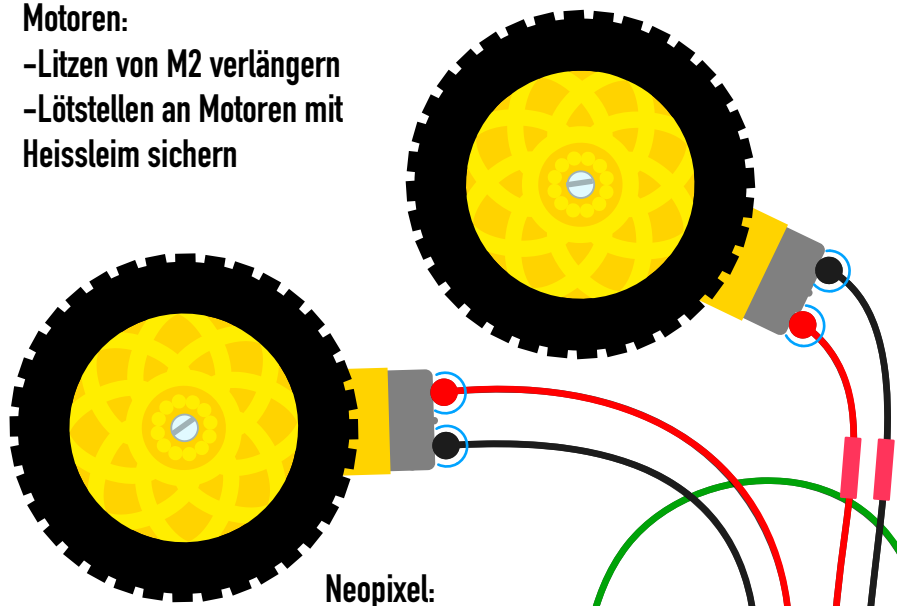


Motoren:

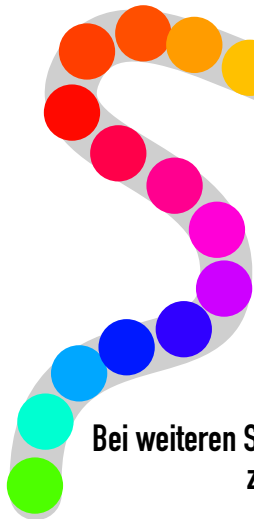
- Litzen von M2 verlängern
- Lötstellen an Motoren mit Heissleim sichern



Servo:
rot → S4+
orange → L2-
braun → S4-

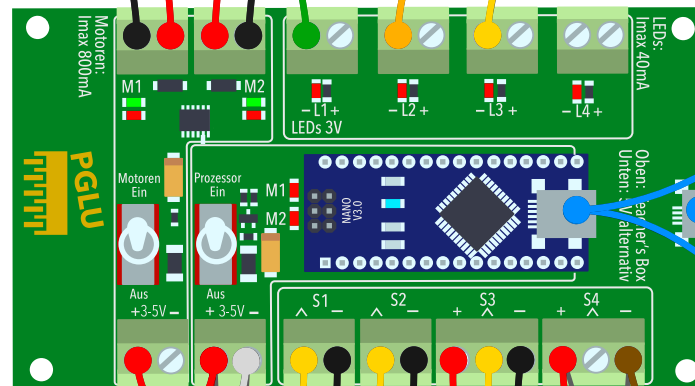
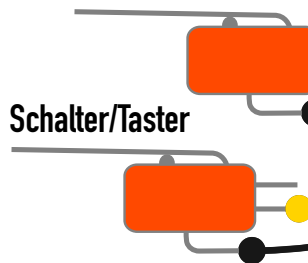
Neopixel:

+5V → 3-5V+
Din → L1-
GND → 3-5V-



Bei weiteren Störungen an Servo:
zweiter Elko 1000µF

Schalter/Taster

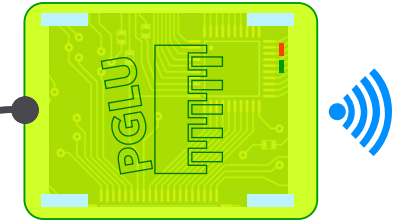


Powerbank:

Roter USB Stecker hier!



Coding mit Teacher's Box:
mach.pglu.box



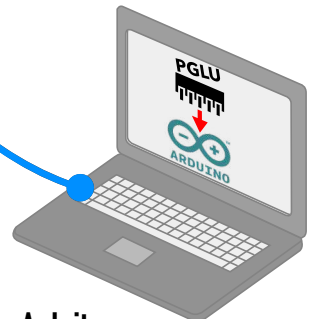
Betrieb:

Powerbank, Netzteil oder PC



Coding alternativ:

mach.pglu.ch → arduino.cc



Anleitung:

PGLU.CH → ANLEITUNG →
ORGANISATION → 4-ZUHAUSE..

Ultraschallsensor:

Vcc → S3+
Trig → L3-
Echo → S3 >
Gnd → S3-

